

## PART III : CATTLE AND BUFFALO BREEDS

Karnataka has six indigenous cattle breeds of which the Deoni cattle breed is the only dual breed. Deoni male animals are used for ploughing and transportation, whereas cows yield up to 1,500 kg of milk per lactation. As the state does not have any prominent milch breed, the dairy farmers use crossbred cattle for milk production.

The balance five registered breeds are Amritmahal, Hallikar, Khilari, Krishna Valley and Malnad Gidda which are draught breeds. The male animal of these breeds is excellent for ploughing and transportation, whereas cows are poor milk yielders with an average milk yield of less than 500 kg per lactation. These animals are sturdy and can withstand adverse climatic conditions. Historically, Amritmahal cattle was used by Nawab Hyder Ali and Tipu Sultan for carrying ammunition into the battlefield on rough roads and across difficult terrains. Both Amritmahal and Krishna Valley breeds are being considered for conservation under recently launched 'Rashtriya Gokul Mission'.

Pandharpuri buffaloes are reared mostly in northern Karnataka. The breed is popular due to rapid reproductive ability. Normally, this buffalo yields 6-7 liters of milk per day. But under good management, the yield can go up to 15 liters.





### III.1. Distribution of Native Breeds of Karnataka

**TABLE III.1.1: Distribution of Cattle Breeds of Karnataka**

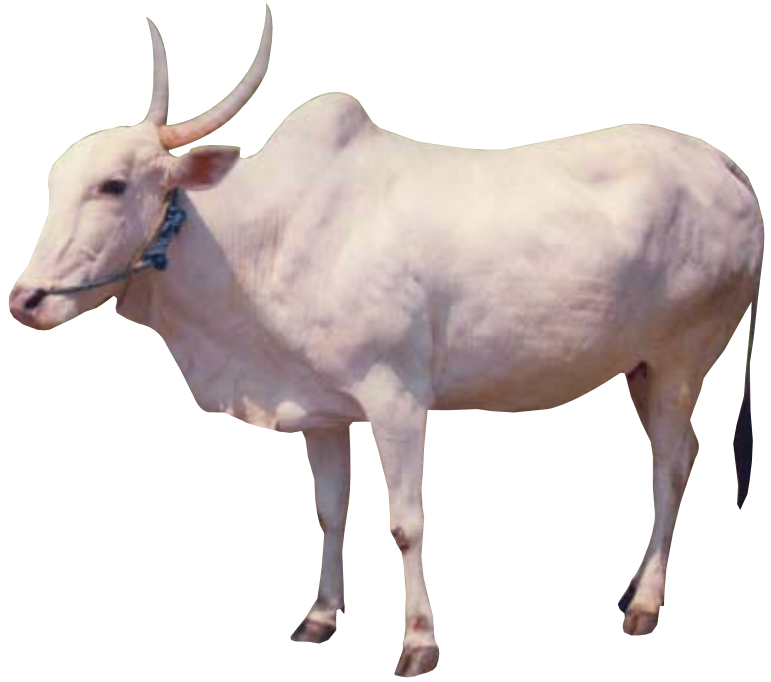
Breeds	Breeding Tract	Utility	Distribution
Amritmahal	Southern Karnataka (Chikmagalur, Hassan, Chitradurga districts)	Draught	Mainly in Chikmagalur, Davanagere, Shimoga, Hassan, Chitradurga, Tumkur districts
Deoni	Marathwada region of Maharashtra and adjoining parts of Karnataka and Andhra Pradesh	Dual	Primarily in Bidar, Gulbarga districts
Hallikar	Mysore, Mandya, Bangalore, Kolar, Tumkur Hassan and Chitradurga districts of Karnataka	Draught	Hassan, Mysore, Mandya, Tumkur, Ramanagara, Chamarajanagar districts. Scattered distribution in other districts also.
Khilari	Southern Maharashtra (Solapur, Sangli, Kolhapur and Satara district) and Bijapur, Belgaum and Dharwad districts of Karnataka	Draught	Mainly Belgaum, Bijapur, Bagalkot, Dharwad, Haveri and Gulbarga districts
Krishna Valley	Belgaum, Raichur and Bijapur districts of Karnataka and Satara, Sangli and Solapur districts of Maharashtra	Draught	Mainly in Bagalkot, Raichur districts
Malnad Gidda	Malnad region of Karnataka	Draught	Primarily in Uttara Kannada, Dakshina Kannada, Udupi, Shimoga, Chikmagalur, Haveri and Hassan, Kodagu districts

SOURCE: AE Nivsarkar et al., (2000), *Animal Genetic Resources of India, Cattle and Buffalo*, ICAR publication and Department of Animal Husbandry, Dairying and Fisheries, Ministry of Agriculture, GoI ([http://www.dahd.nic.in/dahd/WriteReadData/large%20ruminants%20guidelines/Conservation\\_indigenous\\_breeds\\_Cattle%20and%20Buffalo.pdf](http://www.dahd.nic.in/dahd/WriteReadData/large%20ruminants%20guidelines/Conservation_indigenous_breeds_Cattle%20and%20Buffalo.pdf) accessed on 29<sup>th</sup> August, 2014).





### Distribution of Indigenous Cattle Breeds



Amritmahal



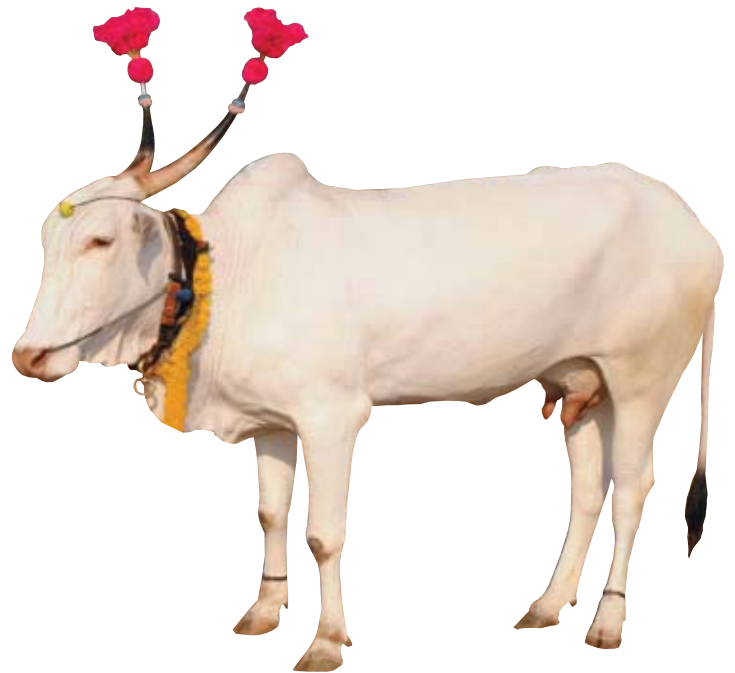
Deoni



### Distribution of Indigenous Cattle Breeds



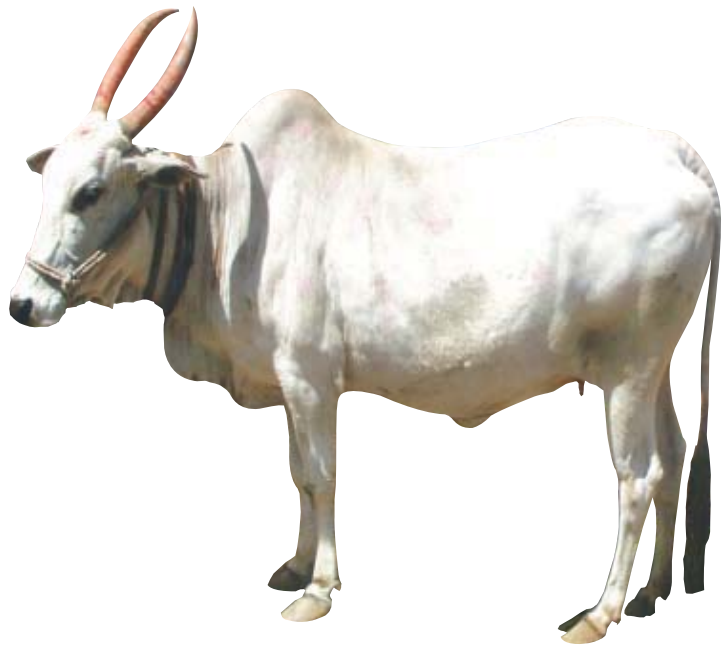
 **Hallikar**



 **Khilari**



### Distribution of Indigenous Cattle Breeds



**Krishna Valley**



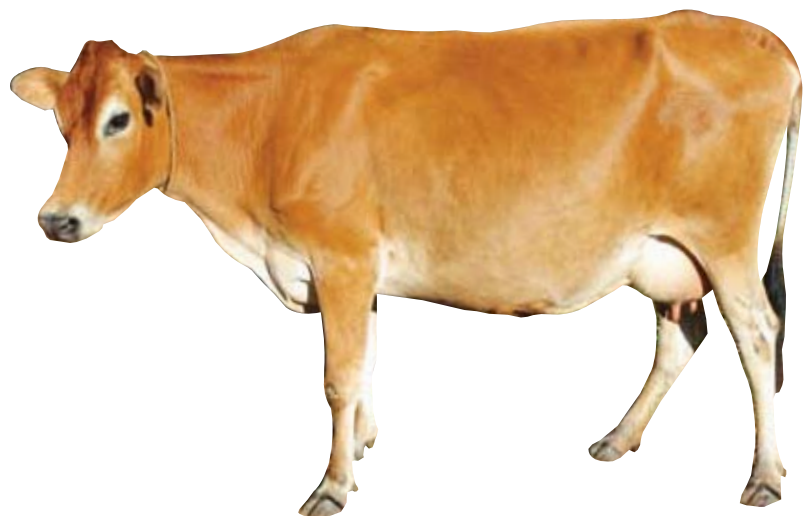
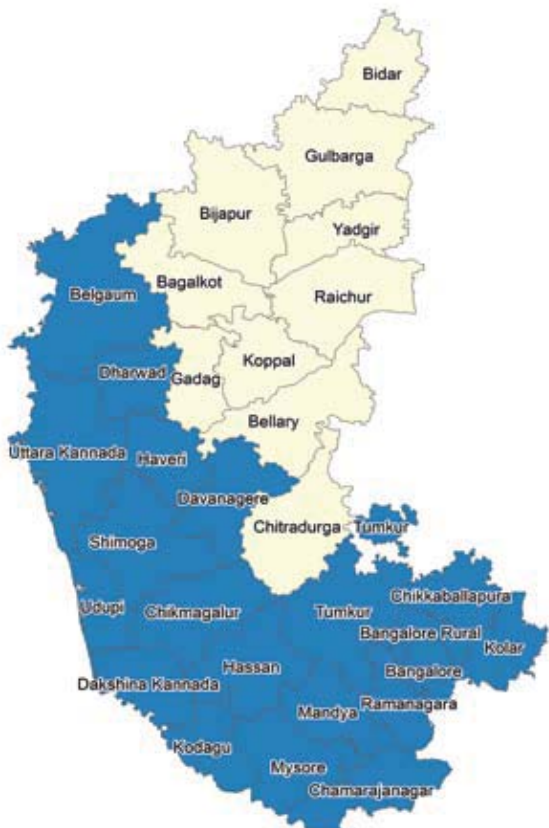
**Malnad Gidda**



### Distribution of Holstein Friesian and Jersey Crossbred



**■ Holstein Friesian Crossbred**



**■ Jersey Crossbred**



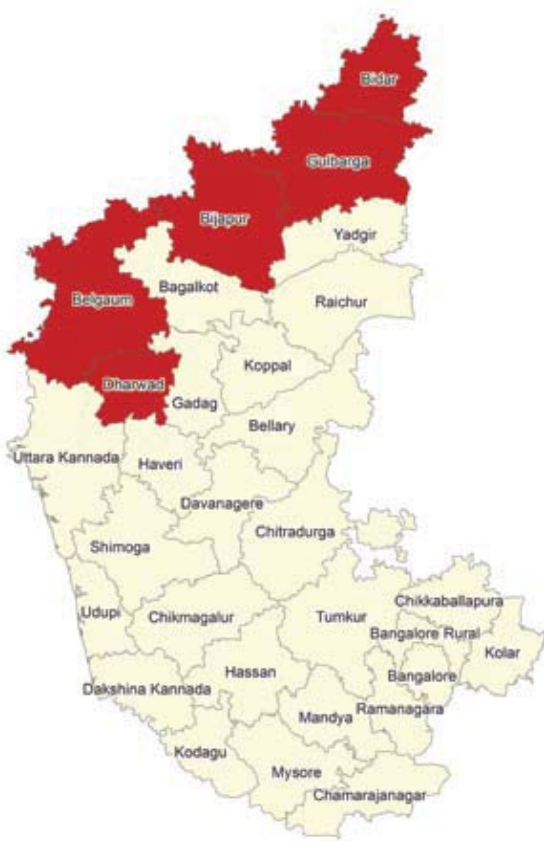
### III.1. Distribution of Native Breed of Karnataka

**TABLE III.1.2: Distribution of Buffalo Breed of Karnataka**

Breeds	Breeding Tract	Utility	Distribution
Pandharpuri	Maharashtra (Kolhapur, Sangli and Solapur districts)	Milch	Belgaum, Bidar, Bijapur, Dharwad and Gulbarga

SOURCE: AE Nivsarkar et al., (2000), Animal Genetic Resources of India, Cattle and Buffalo, ICAR publication and Department of Animal Husbandry, Dairying and Fisheries, Ministry of Agriculture, GoI ([http://www.dahd.nic.in/dahd/WriteReadData/large%20ruminants%20guidelines/Conservation\\_indigenous\\_breeds\\_Cattle%20and%20Buffalo.pdf](http://www.dahd.nic.in/dahd/WriteReadData/large%20ruminants%20guidelines/Conservation_indigenous_breeds_Cattle%20and%20Buffalo.pdf) accessed on 29<sup>th</sup> August, 2014).

#### Distribution of Buffalo Breed



■ Pandharpuri