



NDDB

Flow Chart

BMC Reception

Document No.

NDDB/FC/02

Date of Issue

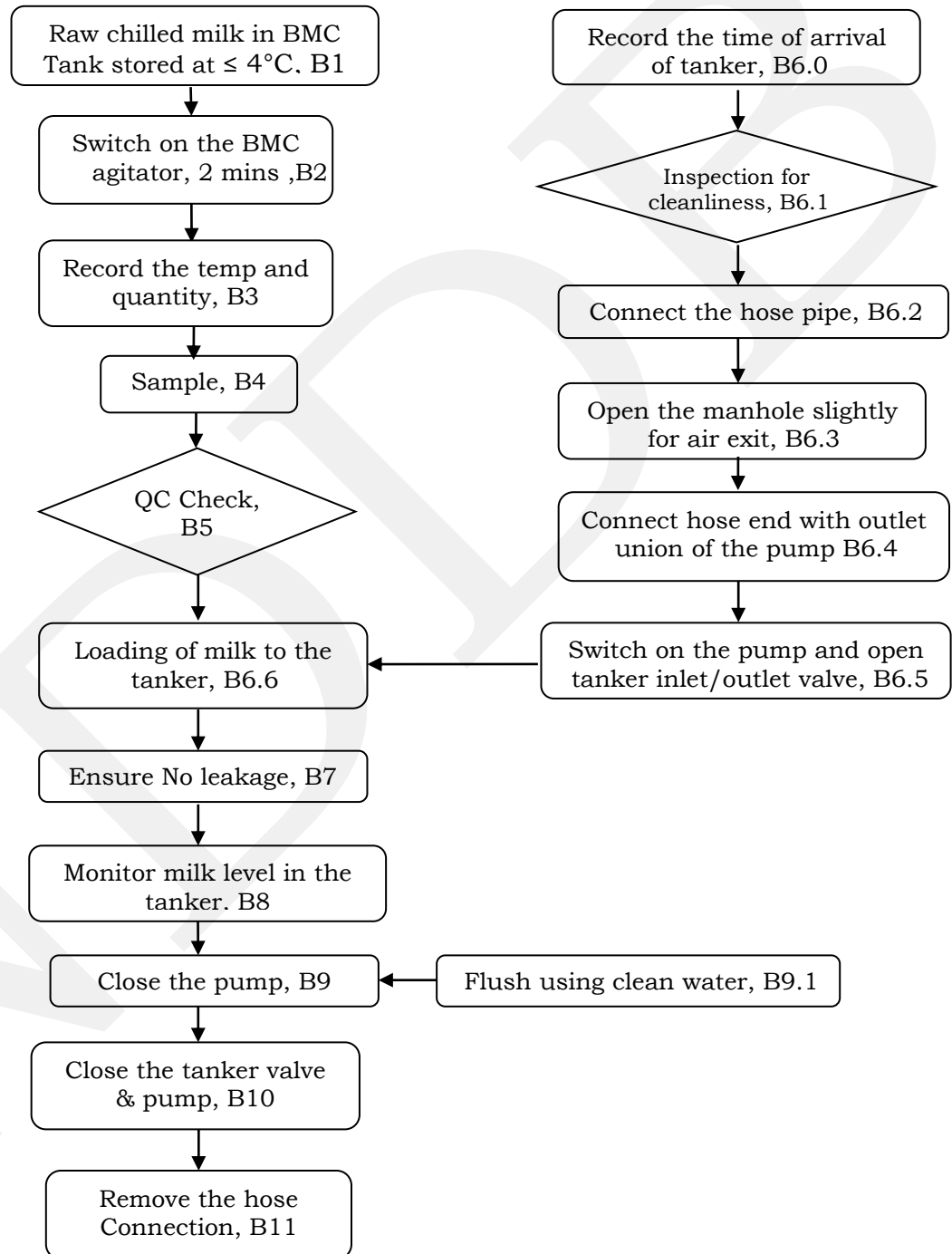
Version

1.00

Page No.

1 of 1

BMC Milk Reception



	BMC Tanker Reception	Document No.	NDDB/WI/02
		Date of Issue	
Version		1.00	
Page No.		1 of 2	
NDDB			
Work instruction			

1. Record the time of arrival of the milk tanker at the BMC centre.
2. Ensure that milk tanker and the milk hose is properly cleaned and sanitized.
3. Switch on the BMC agitator; check the temperature of milk in the BMC tank. Allow the BMC milk content to agitate for 2 minutes and stop the agitator.
4. Take out the dipstick and arrive at weight of milk from the BMC calibration chart. Check this quantity with shift report quantity obtained from the PC.
5. Collect half litre of thoroughly mixed milk for sample testing and quality monitoring checks.
6. Test the part of milk sample for the designated parameters (fat, SNF, sediment tests etc.) as per office instructions.
7. Milk in the tanker should be loaded by hose provided on the tanker through tanker inlet/outlet valve and non-return valve assembly.
8. Do not load milk from the manhole.
9. Remove SS cap from the hose.
10. Open the manhole slightly for exit of air during filling.
11. Connect the hose end with milk outlet pipe, union of the pump.
12. Tighten the connections with the C spanner/ wrench at tanker end & pump end adequately.
13. Switch on the pump and open tanker inlet/outlet valve.
14. Ensure that at nowhere milk is leaking from any connections.
15. Monitor milk level in the tanker and close the pump after BMC milk is loaded in the tanker.
16. Flush the contents of the BMC into a tanker using clean water.

	BMC Tanker Reception	Document No.	NDDB/WI/02
		Date of Issue	
Version		1.00	
Page No.		2 of 2	
NDDB			
Work instruction			

17. Close the tanker valve, pump and remove the hose connection from pump and tanker end.
18. Clean the milk hose with hot cleaning solution and rinse with sanitizer & water. Allow excess water from hose to drain.
19. Connect the tanker end of hose with tanker inlet/outlet and cap the other end.
20. Record the following details correctly and legibly in the milk-sheet/memo/challan and in the log book, after the tanker is loaded:
 - The test result for milk quality for the composite sample.
 - The quantity of milk loaded.
 - The temperature of milk in the tanker.
 - Code number printed on the seals in the milksheet/memo/challan and in the log book. Check for leakages if any.
21. Record in the milk sheet/log book the odometer reading (in kilometres) of the tanker when it reaches/leaves the BMC centre.
22. Record dispatch time of the tanker in Log book.